

# The Informer newsletter

MONTHLY NEWSLETTER | PARAGON CHRISTIAN ALLIANCE INT'L  
& PCAI CLERGY ASSOCIATION FELLOWSHIP  
APRIL 2017 – ISSUE 4



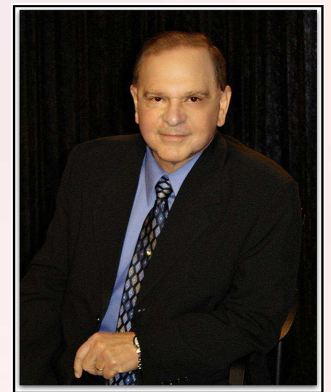
## JESUS IS THE “SAVING LAMB”

*By Dr. Henry A. Harbuck / PCAI Int'l President & General Overseer*

John the Baptist understood the role of Messiah. John said at the River Jordan, “Behold the Lamb of God who takes away the sins of the world.” (John 1:29)

Each year the “Passover Lamb” was selected by the entire family four days before He was to be slain. In the same respect, Jesus was selected by the Father to be the “Passover Lamb.” I also believe the four days to be a sign (or type) of the Kingdom of God; the study of numerology has

taught me this. By selecting the lamb in advance of the time of sacrifice, the family had time to think about the Holy Sacrifice that was soon to come. Of course, there were many other sacrifices observed by the Israelites, but this one closely resembles the Peace-offering. Notice the death of Jesus made Him “The saving Lamb” sacrificed for our sins. This eliminated the enmity that existed between God and mankind and brought peace. Hence, as the “**Saving Lamb**,” Jesus is our peace. Jesus was the



“Lamb of God” chosen from the foundation of the world to be a sin sacrifice, while not actually becoming sin. When He was the most helpless, He was the strongest. Before He went to the cross, He spent much of His time in prayer and agony talking to the Father. And because of His time spent in prayer, He was energized to handle what lay before Him. ♥



## DEVELOPING CHURCH LEADERSHIP: What Can A Teach Us About Leadership?

### “Proper Balance,” “Alignment” & “Inflation”

By Pastor Lynn Burling / Christian Faith Church / Texas



Who in their right mind uses an automobile tire as their subject, but the deeper we go I pray that pastors and leaders will absorb the truth as the Holy Spirit gave it to me. To be a leader of men and women, we must first obey Him who has our steering wheel. Imagine Him turning and we resist, not willing. First, let's say the church is a “vehicle” that is on the move going somewhere, and the Holy Spirit is the driver. The front tires, I've been told by several truckers who drive for a living, are the “steering rubber” and are the most important tires on the vehicle. They represent, if you please for illustration purpose, those that are “out front” leading where the vehicle goes. If you are a leader you never stop following the Holy Spirit. On this vehicle also are two tires on the back—and we'll refer to them as “followers” or in line for training to take over just in case there is a replacement needed. But there is another tire, nestled in the truck that is for emergency use...a 5th tire, not on the ground, but along for the ride, in training as well. It needs to be checked regularly for proper inflation etc. But this person must be ready at a moment's notice to step

up “just in case” (We'll refer to this one later.) Now let us get to the heart of leadership focusing on the qualifications of all the tires on this vehicle.

Number One: The two front tires are those picked by the Holy Spirit to lead. I understand in most churches you only have one leader. But for the sake of this vehicle, we have two in agreement going in the same direction. The very first thing we do when we purchase a new set of tires is (let's all say it together) **balance** them. Yes! If for any reason these (leaders) tires are not balanced, doctrinally or scripturally, we have a problem. Let's say that one is and one isn't, there will not be unity. Balancing your tires will keep them from wobbling or cause them to vibrate, bringing some doubt to the safety of the passengers which is usually transferred to the “whole” vehicle through the steering mechanism. Their “influence imbalance” is felt in the whole vehicle equally if it's negative! In most cases, this imbalance increases with speed and they can't maintain proper traction. The danger of this is pre-mature wear.

We dwell mostly on the front tires because they are the ones that get all the attention. They must be in great shape if we are to reach our destination safely. Even if you do not consider yourself in leadership—you are still a follower and everyone is still in the same vehicle but don't sell yourself too short yet! The second thing, we must check on the tire to see if it has proper inflation; under inflation and over inflation are also dangerous!

I think of the verse in Rom. 12:3. “*Not to think of one-self more highly than he ought to think.*” An overinflated person (or tire, I think you're tracking with me now) has less contact with the road, hence less grip on the road to respond to maneuvers from the driver. An overinflated person in leadership is dangerous. I Cor. 10:12 (A person of pride) “*...let him that thinks he stands take heed lest he fall.*” (If angels fell, what may happen to man? An over inflated person is usually not as sensitive to the one steering. Such a person can't “sense” the owner's directives and is certainly non-sensitive to his flock. Let's turn our attention to

the underinflated tire (leader). Sometimes we have those in leadership who possess “false humility” or in some cases, just don't love themselves as much as they ought. They are constantly looking for praise and try to be people-pleasers. If man's **praise** will **unduly inflate** you, then criticism of man will devastate you. We must live for the praises of God, not the praise of men. It's been said, “*When people pleasers die, they see the life of someone else flash before their eyes.*” If that be the case, how in the world can we love others as -we-love-ourselves? My question is how did that person get in leadership in the first place? Trust me there are people who want to be leaders who have not come to grips with loving themselves enough as truly seeing themselves as Christ sees them. The danger for the under inflated tire is “too much” contact with the rubber on the road which can cause the tire to heat up and be in danger of a blowout! Too much stress and “heat” in our lives can cause failure in our walk with Christ.

*Continued on page 3*



## Proper Balance... Continued from page 2

**Quoting:** **“Under inflation** is the leading cause of tire failure. It is the main cause of increased “friction” causing the tire to overheat, which leads to premature wear, tread separation and blowout!” The Lord knows we don’t need “friction” in leaders, which causes them to fail in reaching their destination! This to me is someone not confident of his calling or gifts or that **“never thinks he’s making a difference.”** They lack the confidence of the task before them.

Another danger in tires is “toe in” or “toe out.” You’ve seen a pigeon-toed person, how when they walk both feet point inward. Their shoes show the excessive wear because of it. Meaning one might be “pulling” to the right while the other is “pulling to the left.” Imagine trying to move a church along and one faction is “pulling to the left” while the other is “pulling to the right.” That church or family is headed to a major breach! We must get our tires (leaders) in alignment, agreement, and going in the same direction. **“Under inflation”, “over inflation” and “toe in toe out”** are all culprits for increased wear and tear and will surely shorten the life of the tire and defeat it’s original design.

Listen leaders, we’ve heard of burnout because of opposition, trials, etc. Make sure if you have anointed someone for the position of leadership that they are equipped, tested, truly balanced in their service. The best leaders have **first** been great followers.

Let’s turn our attention to those 2 back tires (followers), mentored by leaders who are in closest proximity and relationship with those in leadership. As they follow, they see and hear what is done and said by leaders and sometimes they can’t wait for their opportunity to be rotated toward the front position to replace the former leader. (Heb. 13:17 AMP) *“Obey your [spiritual] leaders and submit to them [recognizing their authority over you], for they are keeping watch over your souls and continually guarding your spiritual welfare as those who will give an account [of their stewardship of you]. Let them do this with joy and not with grief and groans, for this would be of no benefit to you.”* So let’s assume the worst has happened. Because of weak oversight or poor maintenance, one of the tires suffers a blowout or a breach! Oh no, I never thought this would happen! So the driver gets out from behind the steering wheel. He proceeds to retrieve the jack and tools to replace the flat tire. On his way toward the back, you can hear the followers, the future leaders

(tires) on the back, yelling pick me! Pick me! But as he continues to the trunk, there is a ready fully inflated, balanced learner who while riding in the truck overheard all the negative things the 2 followers were saying about those leading up front. Now the owner takes the spare and rolls it into position past the 2 tires (followers) who although stayed in their positions but were not supportive of their leaders running them down at every turn! Hence they had not yet learned the basics for a leader. Were you a “spare” at one time waiting your turn, ready in season to be moved up, promoted at a moment’s notice and inserted into service during a difficult time in a spiritual congregation or organization? You might say realistically, I prepared myself but never thought it would be this soon. Child of God, it is God who promotes. Whether you are a teacher, assistant pastor, or leader on any level, learn to pray for your leadership. They need the prayer and you need the practice.

On a closing note: About 7 -8 years ago, in my original delivery of this message, I spoke also on the importance of the vehicle, (the **church**) having its front end in alignment, which if not done can put a lot of undue wear on its leader. Time and space does not permit other details. Years ago, I was

teaching this very same theme on the tire. I had one of the men take a spare tire out of his trunk and when I had taken the pulpit, I gave a signal to roll the tire to the front and lean it on the pulpit. Needless to say, I had their attention. The Spirit of God pointed out a man in the audience to me. The actual words to him were “God is putting you on a fast track.” And I said, “Get ready the Lord is going to accelerate your ministry and calling to promote you!” **He was the same tire!** In just weeks or months, he became Pastor of that church. He thought he would never be in that position. His heart began to consider the word of the prophet which prepared him for the sudden rise in position. God will pass over many to find one faithful, prepared for service believer. (1 Peter 5:5-6 Msg) *“And you who are younger must follow your leaders. But all of you, leaders and followers alike, are to be down to earth with each other, for—God has had it with the proud, but takes delight in just plain people. So be content with who you are, and don’t put on airs. God’s strong hand is on you; he’ll promote you at the right time.”*

Blessings!!!

## What is a Deductible Gift?

We as Christians have a duty to help those in need. These needs can present themselves in a variety of ways, but one of the most common is the unexpectedly ill church member with rising medical bills. Is your generous monetary gift to aid this fellow Christian deductible?

In short, no. Only donations given to 501 (c)(3) entities without any expectation of control over the use of the funds are tax-deductible. You cannot simply give a donation to the church and ask them to pass it on to the needy member, as ultimately you still have control over the use of the donation and the funds are meant to benefit the individual, not the church.

There are certainly ways the church can set up a formal benevolence policy to aid church members and community members in need. Donations given to the benevolence fund can be tax-deductible as the church ultimately has control over who is aided by the donation. Pastors, please call our attorneys here at the Christian Law Association if you would like further information on setting up a benevolence policy able to receive tax-deductible donations.

*SOURCE: The Legal Alert (Christian Law Association Publication) February 2017 Issue. WEBSITE: www.christianlaw.org*

## Prayer Retreat Alert

A few weeks ago we sent out the Prayer & Fasting Retreat letter. On it you can record a prayer request for Dr. Harbuck to pray over during his retreat. If you prefer you may send your request to [pres@aega.org](mailto:pres@aega.org). No one but Dr. Harbuck will see your request whether you send it by mail or email. It **must be received at the office on or before April 19, 2017.**



The INFORMER NEWSLETTER is a free monthly publication of P.C.A.I. - Paragon Christian Alliance International & PCAI Clergy Association

2149 Highway 139, Monroe, Louisiana 71203  
1-866-268-5600 - FAX (318) 345-0350  
Website: [www.paragonchristianalliance.org](http://www.paragonchristianalliance.org)

Copyright © 2017

## Ministry Tax Date to Remember

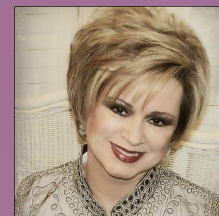
**April 18**—Federal income tax and self-employment tax returns by individuals for calendar year 2016 are due by this date.

Last day to file an amended federal income tax return (Form 1040X) for calendar year 2013 (unless you received an extension of time to file your 2013 return).

**April 29**—Churches hiring their first nonminister employee between January 1 and March 31, 2017, may exempt themselves from the employer's share of Social Security and Medicare taxes by filing Form 8274 by this date (nonminister employees are thereafter treated as self-employed for Social Security purposes). The exemption is only available to churches opposed on the basis of religious principles to paying the employer's share of Social Security and Medicare taxes.

**April 30**—Churches with nonminister employees (or one or more ministers who report their federal income taxes as employees and who have elected voluntary withholding) must file an employer's quarterly federal tax return (Form 941) for the first calendar quarter of 2017 by this date. Enclose a check in the total amount of all payroll taxes (withheld income taxes, the withheld employee's share of Social Security taxes, and the employer's share of Social Security taxes) if these taxes were less than \$2,500 on March 31, 2017.

Keep good records!  
Jan Harbuck -  
PCAI Office  
Need Help?  
Call 1-866-268-5600



No one has greater love than a person who lays down His life for His friends.  
John 15:13 (Complete Jewish Bible)